



McGARVEY
DEVELOPMENT COMPANY
COMMERCIAL • INDUSTRIAL • DESIGN/BUILD

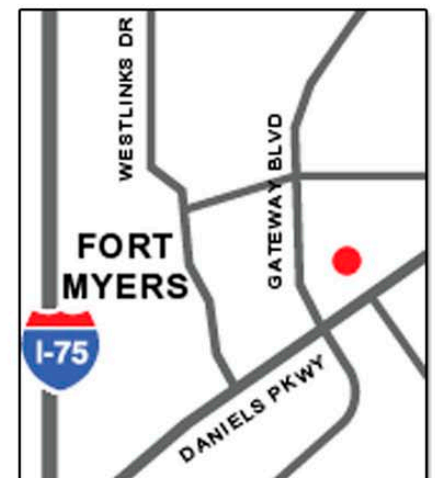
Eastlinks Business Park



Eastlinks V

12551 Professional Park Drive
Fort Myers, Florida

- Three-story, 56,700 square foot Class A office building over parking
- Suites from 2,500 square feet
- Superior corporate accommodations, including professionally designed finishes
- Seven building, office and flex park located at the intersection of Daniels Parkway and Gateway Boulevard
- In close proximity to I-75 and Southwest Florida International Airport
- Full service design and construction with generous build-out allowance
- Broker participation encouraged



239.738.7900

leasing@mcgarveydevelopment.com

www.mcgareveydevelopment.com



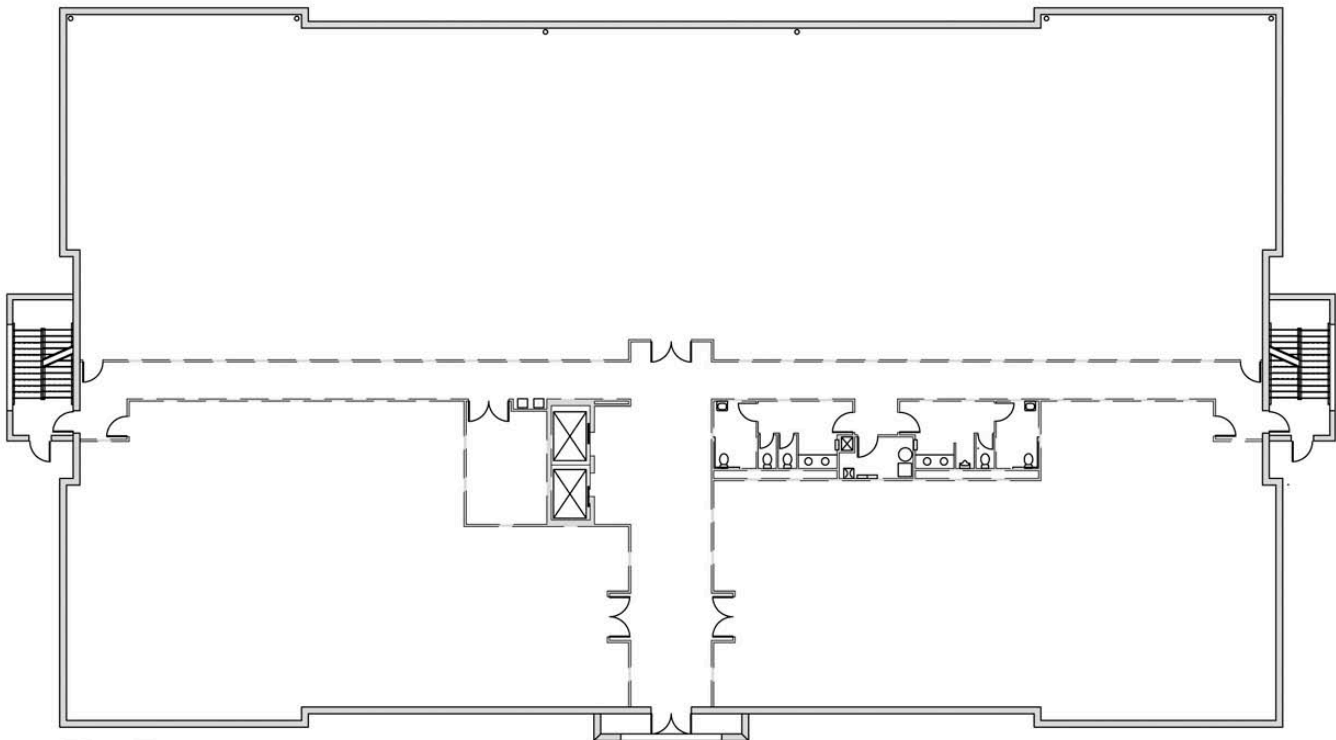
McGARVEY
DEVELOPMENT COMPANY
COMMERCIAL • INDUSTRIAL • DESIGN/BUILD

Eastlinks V

Corporate Accommodations

- Luxurious and spacious lobby
- Ample parking with curbs and lighting
- Professionally maintained landscaping
- High-profile address in the growing SW Florida market
- 24 hour card access

Floor Plan



First Floor