



McGARVEY
DEVELOPMENT COMPANY
COMMERCIAL • INDUSTRIAL • DESIGN/BUILD

Westlinks Business Park



Westlinks IX

12801 Westlinks Drive
Fort Myers, Florida

- Two-story, 32,855 sq. ft. office building
- Located at entrance to Westlinks Business Park
- Keyless entry and state of the art safety system
- Energy-efficient and impact-resistant glass
- Concrete tilt-wall construction
- Professionally landscaped grounds
- Full-service design with generous build-out allowance
- Broker participation encouraged



239.738.7900

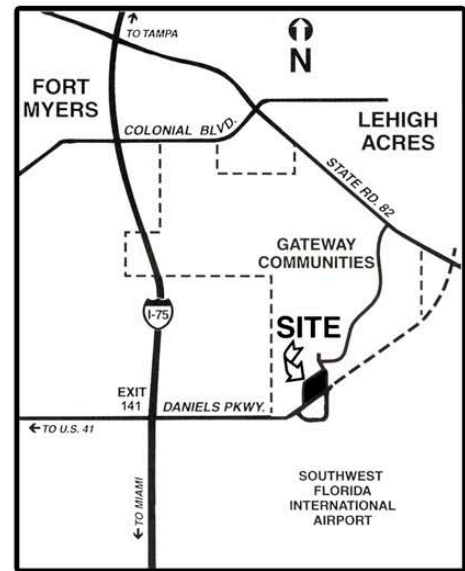
leasing@mcgarveydevelopment.com

www.mcgarydevelopment.com

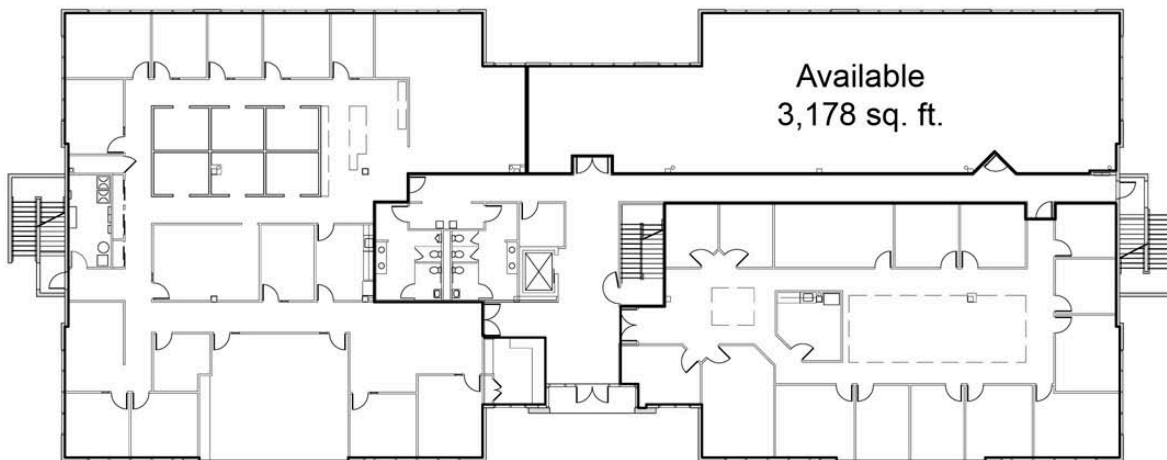
Westlinks IX

Strategic Location

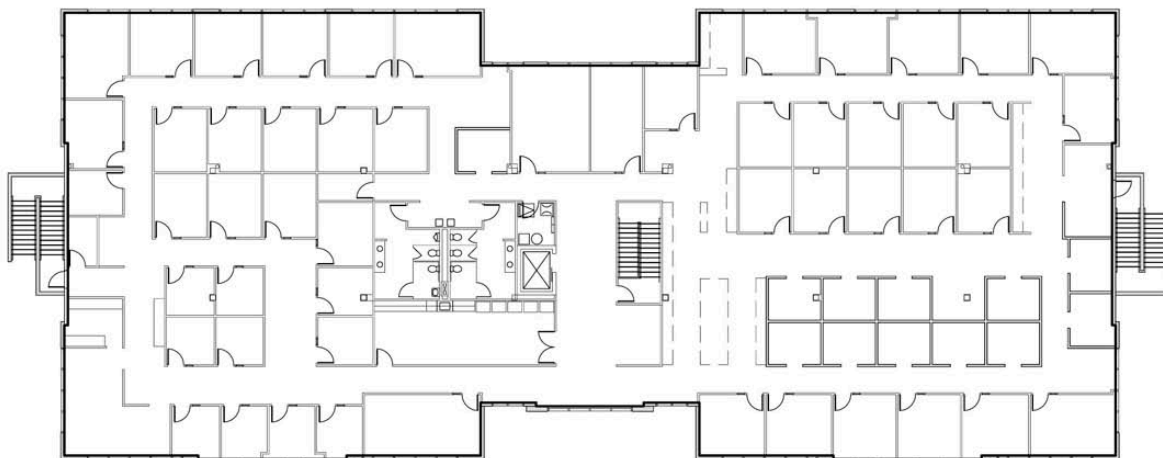
Westlinks IX is located within Westlinks Business Park, a fourteen-building office and flex park located off of Daniels Parkway in Fort Myers. Westlinks is also located within Gateway, a 3,000-acre master-planned community, and within minutes to I-75, U.S. 41 and Southwest Florida International Airport.



Floor Plan



First Floor



Second Floor